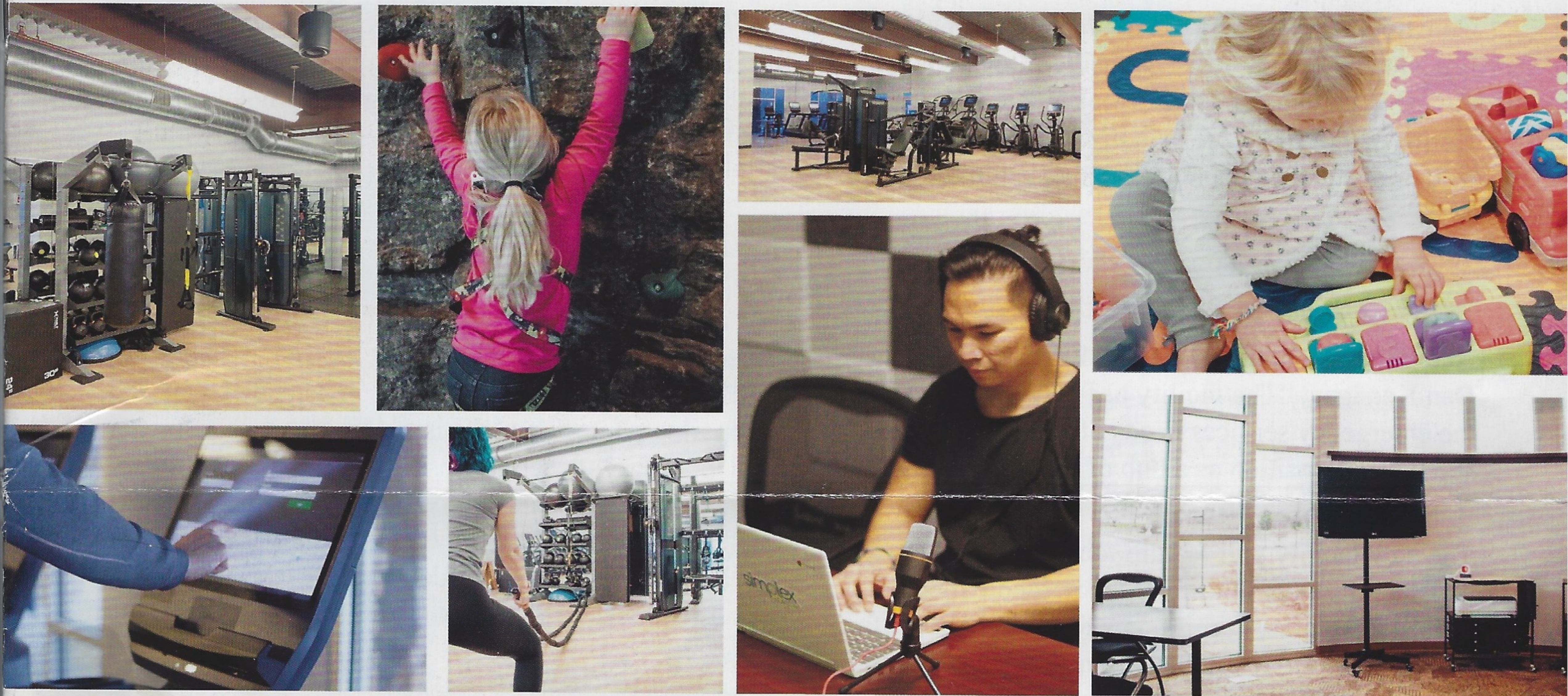


#GetUPT

Your New Community Center: Re-imagined and Rejuvenated



There's something for everyone at the re-imagined Upper Providence Community Center.

Little girls who dream of becoming a princess, seniors looking to exercise and socialize, kids who love sports, and residents of all ages interested in creativity, fitness, and fun will find exactly what they're looking for at the newly rejuvenated Upper Providence Community Center. The Center's spaces, facilities and programs have been completely re-imagined to meet the diverse needs and interests of township residents.

(continued on Page 9)

INSIDE THIS EDITION:

FIRE AND EMERGENCY SERVICES	2
PUBLIC WORKS	3
ADMINISTRATION	4-5
PARKS AND TRAIL MAP	6-7
POLICE	8
PARKS AND RECREATION	1, 9



Fire and Emergency Services

Going Up!

New Fire and Emergency Services Facility Takes Shape

A fire, an accident, a health crisis, or any other emergency demands a fast, capable response. Upper Providence Township's ability to provide the best possible response will soon be better than ever.

Construction has begun on the township's new central fire and emergency services facility. Located on the township campus on Black Rock Road, the new facility will replace the existing fire station, which will be demolished. Occupancy is expected in the spring of 2022.

Ready for Today and Tomorrow

According to Chief of Fire and Emergency Services Dan Kerrigan, "The facility has been designed to serve the emergency services needs of the community and support our position as a hub of regional emergency response efforts."

The new facility will feature four drive-through bays to house fire and Emergency Medical Services (EMS) apparatus, dorm rooms for overnight staffing, a training room that will also serve as the township's emergency operations center, and office space for fire department staff.

The station has also been designed to protect the wellbeing of township firefighters. The building includes a diesel exhaust removal system, individual building zones that eliminate the potential for cross-contamination from firefighter equipment, personnel and equipment decontamination facilities, a fitness room, work areas for on-duty crews, and storage for equipment and supplies.

With environmental responsibility and expense factors in mind, the building features energy-efficient lighting and windows, a standing seam metal roof, and ventilation system zoning designed to maximize efficiency and reduce overall utility costs.

Fiscal Responsibility. Future Needs.

Balancing both fiscal responsibility and the future needs of the community was the combined goal in creating the new facility. Township Manager Tim Tieperman noted that, "This facility is an investment in Upper Providence Township's future that will reap dividends to the community. With our new facility, we will be positioned as a regional leader, while achieving greater efficiencies in our delivery of emergency services."

Thanks to a Great Team and Community

Our gratitude goes out to the design team of D'Huy Engineering, GKO Architects, Redstone Architects, and Gilmore & Associates. We appreciate their hard work on this project.

The township also thanks the community for their unwavering support of our emergency services personnel and our partner agencies. The Department of Fire and Emergency Services looks forward to continuing the expansion of our relationships and cooperation with all fire and EMS agencies that protect the Upper Providence community. Together we will work toward a sustainable, regional approach to fire and EMS services in our community. ❖



Firehouse Groundbreaking



Rivercrest trail 2019

New Trail in the Works!

A new trail will soon be coming to the township! Beginning at the township building on Black Rock Road, the trail will wind south past RiverCrest Golf Club and connect with the Schuylkill East Trail that runs from Lock 60 to Upper Schuylkill Valley Park.

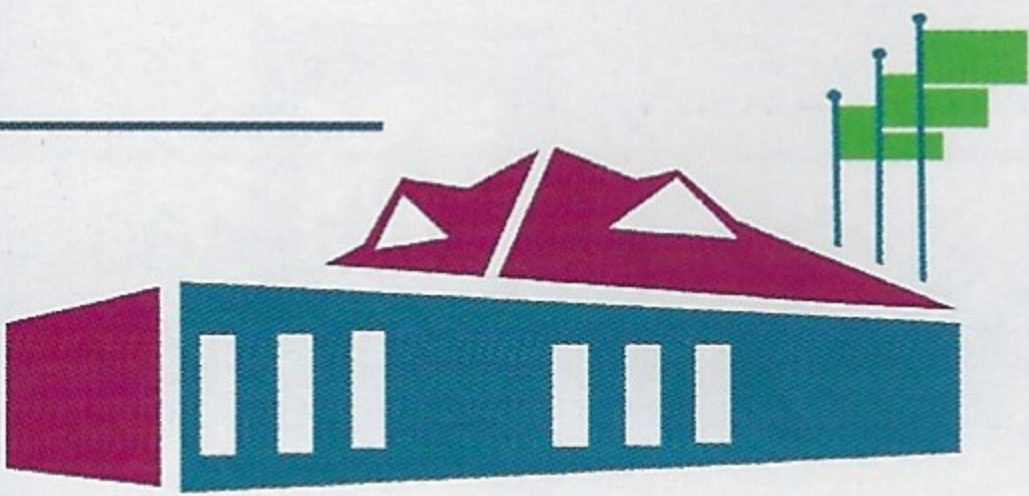
According to Public Works Director Tom Broadbelt, "The trail will replace a dirt path that currently exists, following a beautiful route through wooded areas and along a ravine. By intersecting with the already improved Schuylkill East Trail, we'll also provide a connection to the Schuylkill River Trail, providing many miles of enjoyment for area residents." The paved trail will be just under a mile long, and will be funded, in part, by a \$100,000 Montco 2040 grant. The project will be completed by late summer or early fall. If all goes as planned, we'll all be able to enjoy the fall colors from this beautiful new vantage point! ❖

Hess Preserve Upgrade

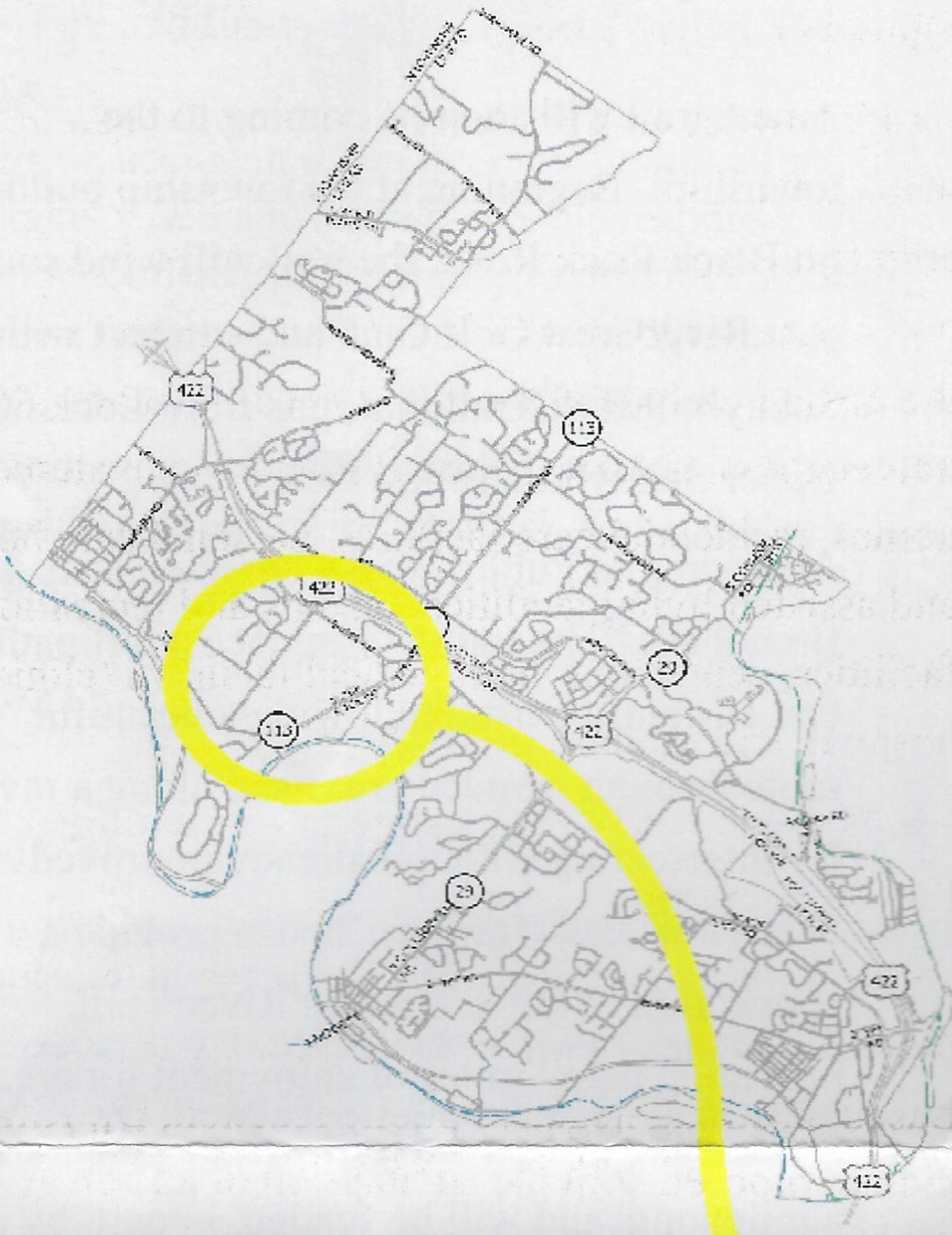
Eight parking spaces have recently been created at the Hess Preserve on Rittenhouse Road in Royersford. This will make it easier for residents who drive to the preserve to enjoy this beautiful space. Deeded to the township in 1998 in memory of Mildred Hess, the property is a 43-acre, passive park perfect for walking, bird watching, and simply enjoying nature through every season. ❖



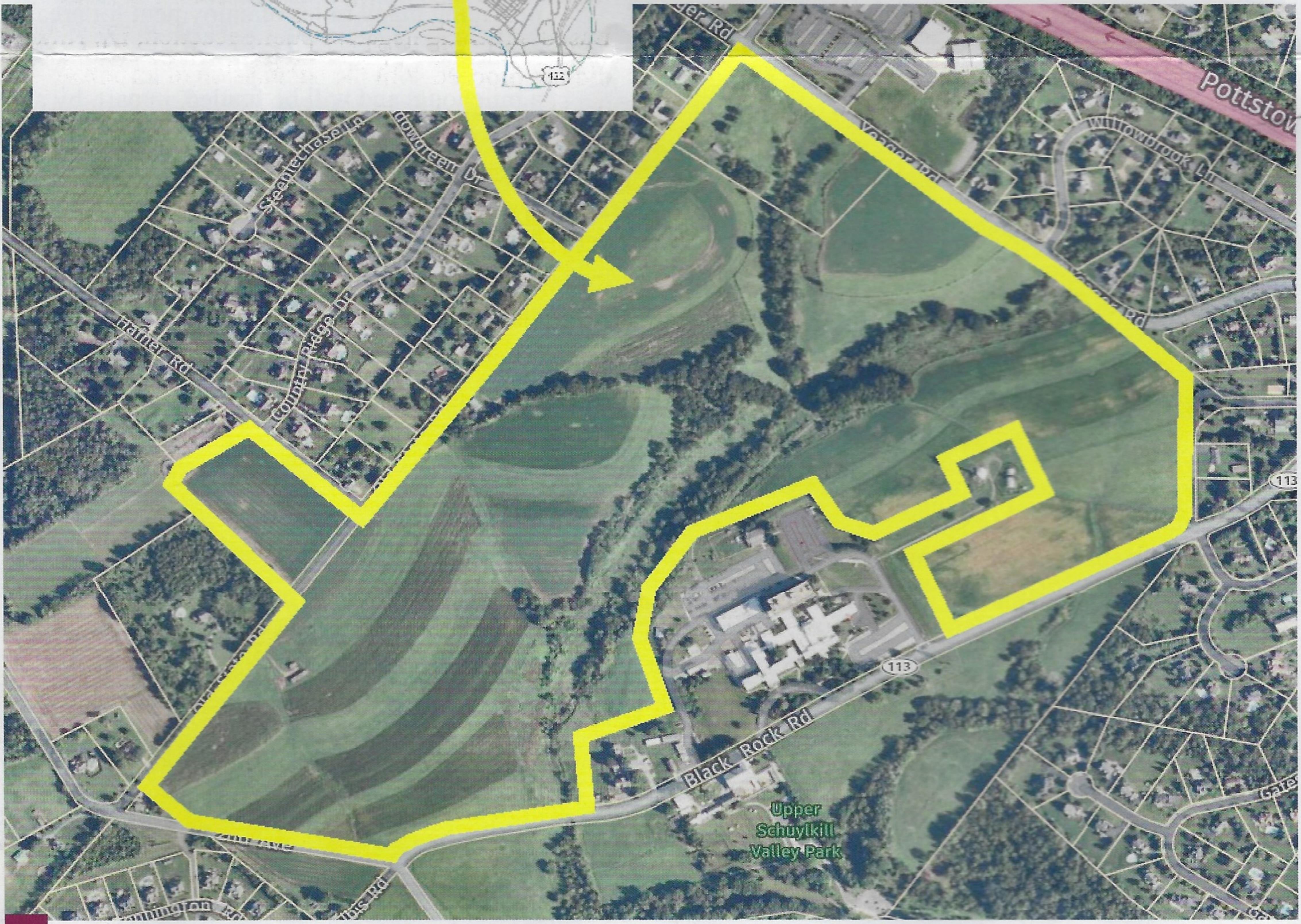
Hess Preserve Parking Lot



Administration



**Privately owned
Land surrounding
Parkhouse Nursing and
Rehabilitation Center**



Parkhouse Fact Sheet

In response to several residential inquiries fielded by Township Staff regarding the Parkhouse property, the Township administration has released an official frequently asked questions (FAQ) factsheet to answer the most common questions received about this parcel:

1. What is the Parkhouse property?

- This is a reference to a ~ 176-acre tract of land that was owned for many years by Montgomery County. The geriatric center on the site was renamed to honor then county commissioner Russell Parkhouse. The land was sold by the county in 2014 to close a gap in the county budget. It continues to be referred to as the Parkhouse property although it is no longer owned by the county and it was never owned by anyone named Parkhouse. It is owned by Dr. Scott Rifkin of the Baltimore area.

2. What is zoning?

- Zoning laws and ordinances tell you how you can use your land: residential, commercial, industrial, etc. Every township and borough adopt an official map showing its zoning districts. In addition to the map, most municipalities also have some number of additional “overlay” districts. These are secondary or additional zoning classifications that are in addition to the district on the map. It is sometimes said that they “float” above the map and touch down wherever a property satisfies the additional criteria of the overlay.

3. How is the Parkhouse property zoned?

- On the zoning map, Parkhouse shows as being “open space”. This is a carryover from when it was land owned by the county. Open space is not a zoning type that applies to private land. The zoning was not changed when the land was sold by the county because there was already an overlay that applied to the land. That overlay is the IN-Institutional Overlay District.

4. What does the current zoning of Parkhouse allow to be built there?

- IN District uses are what would be thought of uses that are typically run by non-profit or quasi- governmental organizations, but there is no regulation requiring non-profit status. Specific uses named in the district include schools (colleges, day cares, and universities), libraries, nursing homes (convalescent homes, residential care facilities, personal care homes, and assisted living facilities), camps and recreational facilities, cemeteries, and medical facilities (clinic, hospital, and sanitariums).

5. Is there a pending change to the zoning at Parkhouse?

- Dr. Rifkin approached the Township about changing some of the criteria in the IN-zoning district. Based on strong negative public reaction, Dr. Rifkin did not proceed with the submission of an actual development plan. Two supervisors saw an overview and description of a proposal and felt it was necessary to bring in front of the full board, as well as the residents of the Township, for their perspective. However, the Supervisors never voted on anything because Dr. Rifkin halted any further discussion, stating that he might return at some later date after doing additional research. Nothing is pending at the present time.

6. Is Parkhouse protected open space?

- No. The land can be developed under the IN Overlay District

Residents may view the Parkhouse aerial overview on page 2 of this release and are encouraged to contact the Township at (610) 933-9179 if they have additional questions not answered in this FAQ. Residents may also review the full context of Dr. Rifkin’s letter at www.uprov-montco.org under Township News ❖



1. Anderson Farm Park

- 499 Hopwood Road, Collegeville
- 1.3 mile loop trail

2. Black Rock Park

- 1286 Black Rock Road, Phoenixville
- .5 mile loop trail

3. Hess Preserve

- 275 Rittenhouse Road, Royersford
- 1 mile loop trail

4. MacFarlan Park

- 250 Green Tree Road, Phoenixville
- .3 mile loop trail

5. Perkiomen Trail

- Parking available at Lower Perkiomen Valley Park

6. Schuylkill River Trail

- Parking available at:
 - Longford Park/Reynolds' Dog Park
 - Lock 60 Recreation Area
 - Upper Schuylkill Valley Park

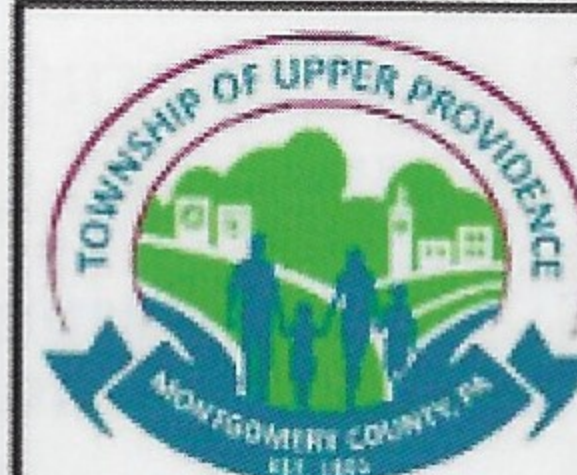


Trails and Sidewalks

- Sidewalk
- Trails
- Trails within Parks
- Montgomery County Regional Trails
- <all other values>

UPT Parks and Open Space

- UPT Open Space
- UPT Park
- UPT Fire House and future park expansion
- UPT Compost Yard



Upper Providence Township

Montgomery County Pennsylvania
1286 Black Rock Road, Phoenixville, Pennsylvania 19460
Phone: 610.933.9179 | www.uprov-montco.org

Trail Map

Dated created: March 17, 2021

Trail Map

Visit us online at www.uprov-montco.org.

Protection on Two Wheels

Sometimes protecting our community can be accomplished more effectively on two wheels rather than four. That's why the Upper Providence Township Police Department includes a Bicycle Patrol Unit that rides the trails, pedals through parks, neighborhoods and shopping centers, and has a presence at Community Day, Canal Day, and other special events.



Cpl. Reynolds with equipment

Instead of riding in police cruisers, these officers cruise on mountain bikes designed to handle both paved surfaces and areas not easily accessible by car. The department currently has a fleet of six Trek bikes of various sizes to accommodate the height differences of our patrol officers.

Specialized Training

Imagine riding a mountain bike down the steps of the Philadelphia Museum of Art and you'll get an idea of the skills required to be a Bicycle Patrol Officer. This is just one of the drills officers must conquer as part of a required, 32-hour training program designed by the International Police Mountain Bike Association

(IPMBA). Officers participate in an intensive week of skill building in specific areas, completing obstacles courses and long-distance rides. To remain on the Bicycle Patrol Unit, officers must maintain their training and annually demonstrate that they are proficient in their abilities.

Areas of Focus

Our police department carefully monitors staffing to assure that there are an adequate number of officers in patrol cars to immediately respond to emergencies. When staffing allows, officers who are bicycle trained will mount their bicycles onto their assigned patrol vehicles and drive to areas where a bicycle patrol presence can be especially effective. Our trails and parks are a high priority focus for officers, especially when the weather gets nicer in the spring and summer. These areas are frequented by our community members and others passing through along the Schuylkill and Perkiomen Trails.

Your Safety, Our Priority

As always, our priority is the safety of residents and visitors to our beautiful township. Our bicycle patrol provides an added measure of protection by providing a visible, physical presence, and the ability to respond to emergencies in areas where our patrol vehicles cannot always navigate.

We hope that in 2021 the community will have more opportunities to see the Upper Providence Police Department's Bicycle Patrol Unit out and about throughout the township. When you do, we hope you'll give them a wave or a smile, and let them know how much we appreciate their service. ❖



Bike Team Fleet



Recreation



Visit getupt.org or call 610-933-9179 for more details!

Community Center located at Anderson Farm Park at 499 Hopwood Road, Collegeville, PA 19426
Visit www.uptrc.com or call 484-391-2390 for more information and/or class updates.

(continued from front page)

An Opportunity for Change

While the COVID-19 pandemic forced the closure of the Community Center during the past year, it also presented an opportunity for change and revitalization. According to Director of Parks and Recreation Sue Hoffman, “The center had not been updated since it was built. It was time to give the center some TLC. With the pandemic forcing us to close the center’s doors, we had time to renovate. We also recognized that while we have a beautiful building sitting on one of our most used parks, the community was not aware of why the building was there, or what it offered. We recognized the need to get creative with the existing spaces and to reimagine our



GEX Virtual Training Room

programming.” That reimagining quickly snowballed as new ideas took hold and improvements were made to create a Community Center designed to be enjoyed by all.

What’s New and Exciting?

A renewed sense of energy can be felt the moment you walk into the Community Center. New paint and a light, airy atmosphere welcome you into the building. The glassed, multi-purpose space is now a vibrant Kid’s Corner where children can interact and play while parents or guardians enjoy other activities. Those activities can include creating a podcast or hosting a meeting in our podcast studio, joining a class in the group exercise space, or spending time creating in the Silo area, now reinvented as a maker space complete with a computer, printer/copier, TV, Cricut, 3D printer and free Wi-Fi. The rock wall is now open for climbers during all operating hours, with helmets and harnesses available. A state-of-the art fitness center and full gymnasium will appeal to athletes and fitness enthusiasts.

Spring and Summer Programs

As the pandemic slows, Sue Hoffman notes that even more programs will be developed for teens, families and seniors. “This spring, the Community Center will be offering a wide range of programs and special classes,” she notes. “Princess class, basketball programs, teen lifting programs, senior activities, art, pottery classes, and family nights are just a few. Summer programming will be offered, and our popular summer camps will soon be in full swing at many of the township’s park locations.”

Community Pass and Memberships

Residents of Upper Providence Township can utilize many of the Community Center’s amenities free of charge with a Community Pass. Residents and non-residents who would like to access everything the center has to offer can do so with a low-cost membership. “Our purpose is to be welcoming to all,” said Sue Hoffman, “and to provide a Community Center that is a safe, clean and comfortable space for our neighbors to play, learn and grow.

Join Us!

Get to know your new Community Center, and join friends and neighbors in a space designed with your enjoyment in mind. To learn more about hours, fees, activity schedules, summer camps and more, visit www.getupt.org. We look forward to seeing you soon! ❖



Fitness Center

Follow us on Facebook, Instagram and Twitter!



Recreation



Visit getupt.org or call 610-933-9179 for more details!

Community Center located at Anderson Farm Park at 499 Hopwood Road, Collegeville, PA 19426
Visit www.uptrc.com or call 484-391-2390 for more information and/or class updates.



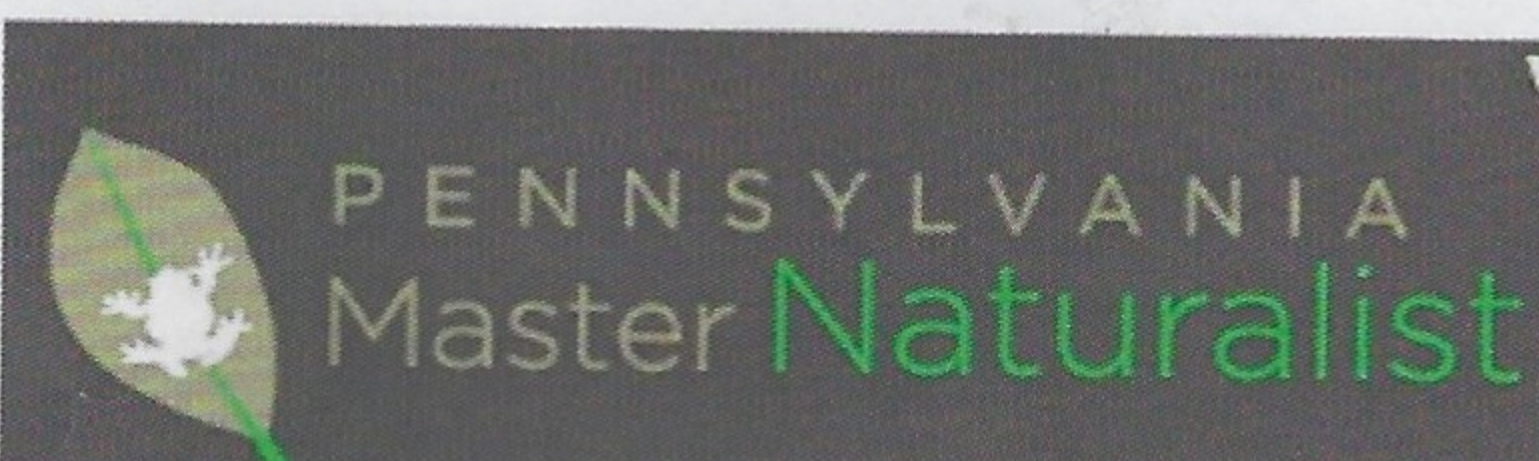
DOG DAYS OF SUMMER EVENT

JUNE 5, 2021
BLACK ROCK PARK
WWW.GETUPT.ORG

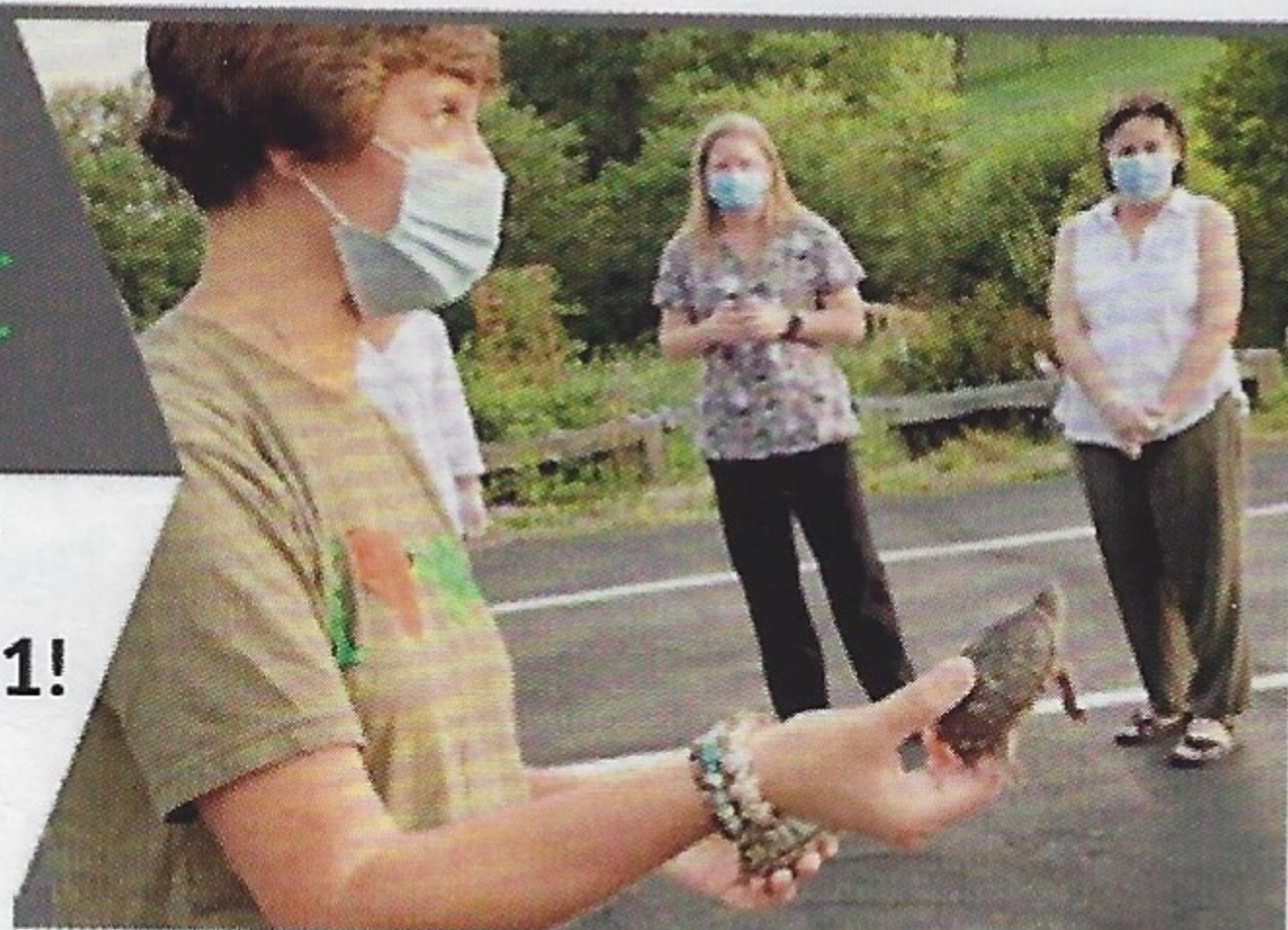
UPPER PROVIDENCE TOWNSHIP COMMUNITY CENTER

May 2021

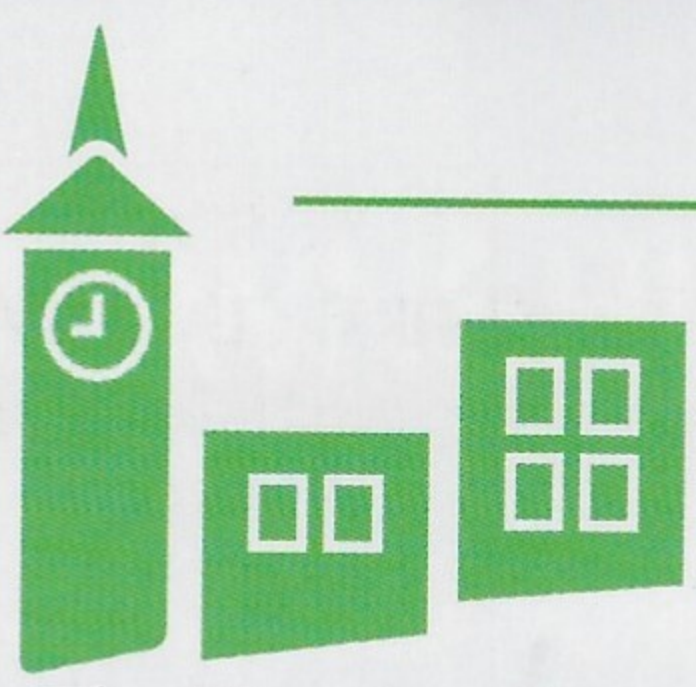
LEGEND:		(AMP) -- Amphitheater		BLUE – Programs		NOTES:			
(GEX) – Group Exercise Room		(BR) – Black Rock		GREEN – Special Programs/Events		-To avoid class disruptions, please arrive 5 minutes prior to the start of class.			
(KC) – Kids Corner		(AF) – Anderson Farm		**UPTCC will be closed on Mon., May 31*		-Masks are <u>always</u> required during class. Spots are limited due to social distancing.			
(KG) – Kids Corner/GEX						-10+ are welcome with a parent or guardian. 14+ may join all classes independently.			
(S) – Silo						-All classes/programs are subject to change.			
See Front Desk for class registration and pricing information									
3	8-10a OG Bball (G) 1-3p Hooks and Needles (GEX) 2-4:30p OG Bball (G) 4-4:45p Kids Group Fitness (G) 5-6p Youth Pottery (GEX) 5:30-7:15p Jump Start (AF) 6-7p Yoga/GM Sheila (AMP) 6:30-8p Ault Pottery (GEX) 6:30-8p OG Bball (G)	4	8-9a OG Bball (G) 9:15-9:45a Mini Music Movers (KG) 9-9:45a Recess(G) 10-10:45a Mini Music Movers (KG) 12-4p OG Bball (G) 4-4:45p Creative Corner (KG) 5-7:30p Open Rock Wall *Call for OG	5	8-10a OG Bball (G) 9:30-10:30a Little Explorers Nature Class (KG) 11-12p Little Explorers Nature Class (KG) 1-3p Mahjong (GEX) 1-3p OG Pickleball (G) 3-4:00p OG Bball (G) 4-4:45p Indoor Soccer (G) 5-7:30p Open Rock Wall 7-8p OG Bball & Vball (G)	6	8-9a OG Bball (G) 10-10:45a Zumbini (KG) 11-11:45a Zumbini (KG) 12-4p OG Bball (G) 4-4:45p Kids Gym Corner(G) 6-8p OG Bball (G) 6-8p SFHS Honors Orchestra Concert (AMP)	7	8-10a OG Bball (G) 11:30a-1p OG Pickleball(G) 2-4:30p OG Bball (G) 4:30-8p OG Family Night (G)
10	8-10a OG Bball (G) 1-3p Hooks and Needles (GEX) 2-4:30p OG Bball (G) 4-4:45p Kids Group Fitness (G) 5-6p Youth Pottery (GEX) 5:30-7:15p Jump Start (AF) 6-7p Yoga/GM Sheila (AMP) 6:30-8p Ault Pottery (GEX) 6:30-8p OG Bball (G)	11	8-9a OG Bball (G) 9:15-9:45a Mini Music Movers (KG) 9-9:45a Recess (G) 10-10:45a Mini Music Movers (KG) 10:30-11a Pop Up Foam/Stretch (S) 10-11a UPT Watershed Program-Pre-K (BR) 12-4p OG Bball (G) 4-4:45p Creative Corner (KG) 5-7:30p Open Rock Wall 6-6:30p Pop Up Foam/Stretch (S) *Call for OG	12	8-10a OG Bball (G) 9:30-10:30a Little Explorers Nature Class (KG) 11-12p Little Explorers Nature Class (KG) 1-3p Mahjong (GEX) 1-3p OG Pickleball (G) 3-4:00p OG Bball (G) 4-4:45p Indoor Soccer (G) 5-7:30p Open Rock Wall 6p SFASD Jazz Ensemble Concert (AMP) 7-8p OG Bball & Vball (G)	13	8-9a OG Bball (G) 10-10:45a Zumbini (KG) 11-11:45a Zumbini (KG) 12-4p OG Bball (G) 4-4:45p Kids Gym Corner(G) 6-8p OG Bball (G)	14	8-10a OG Bball (G) 11:30a-1p OG Pickleball(G) 2-4:30p OG Bball (G) 4:30-8p OG Family Night (G) 5:30-7:30p Movie night (KC)
17	8-10a OG Bball (G) 1-3p Hooks and Needles (GEX) 2-4:30p OG Bball (G) 4-4:45p Kids Group Fitness (G) 5-6p Youth Pottery (GEX) 5:30-7:15p Jump Start (AF) 6-7p Yoga/GM Sheila (AMP) 6:30-8p Ault Pottery (GEX) 6:30-8p OG Bball (G)	18	Election Day No classes held upstairs. Fitness Center will be open to members. 9-9:45a Mini Music Movers (KG) 9:45-10:15a Mini Music Movers (KG)	19	8-10a OG Bball (G) 9:30-10:30a Little Explorers Nature Class (KG) 11-12p Little Explorers Nature Class (KG) 1-3p Mahjong (GEX) 1-3p OG Pickleball (G) 3-4:00p OG Bball (G) 4-4:45p Indoor Soccer (G) 5-7:30p Open Rock Wall 7-8p OG Bball & Vball (G)	20	8-9a OG Bball (G) 10-10:45a Zumbini (KG) 11-11:45a Zumbini (KG) 12-4p OG Bball (G) 4-4:45p Kids Gym Corner(G) 6p PVSD Choral/Vocal Ensemble Concert (AMP) 6-8p OG Bball (G)	21	8-10a OG Bball (G) 10-10:45a Nature Class (KG) 11:30a-1p OG Pickleball(G) 2-4:30p OG Bball (G) 4:30-8p OG Family Night (G)
24	8-10a OG Bball (G) 1-3p Hooks and Needles (GEX) 2-4:30p OG Bball (G) 4-4:45p Kids Group Fitness (G) 5-6p Youth Pottery (GEX) 5:30-7:15p Jump Start (AF) 6-7p Yoga/GM Sheila (AMP) 6:30-8p Ault Pottery (GEX) 6:30-8p OG Bball (G)	25	8-9a OG Bball (G) 9-9:45a Mini Music Movers (KG) 9-9:45a Recess (G) 9:45-10:15a Mini Music Movers (KG) 12-4p OG Bball (G) 4-4:45p Creative Corner (KG) 5-7:30p Open Rock Wall *Call for OG	26	8-10a OG Bball (G) 9:30-10:30a Little Explorers Nature Class (KG) 11-12p Little Explorers Nature Class (KG) 1-3p Mahjong (GEX) 1-3p OG Pickleball (G) 3-4:00p OG Bball (G) 4-4:45p Indoor Soccer (G) 5-7:30p Open Rock Wall 6p PHXSD Vocal Fusion Concert (AMP) 7-8p OG Bball & Vball (G)	27	8-9a OG Bball (G) 10-10:45a Zumbini (KG) 11-11:45a Zumbini (KG) 12-4p OG Bball (G) 4-4:45p Gym Corner(G) 6-8p OG Bball (G)	28	8-10a OG Bball (G) 11:30a-1p OG Pickleball(G) 2-4:30p OG Bball (G) 4:30-8p OG Family Night (G)



UPT is hosting the Pennsylvania Master Naturalist Program Training for Fall 2021!
Register at pamasternaturalist.org



Check our website for a list of Group Exercise Classes.



In Development

Phone: 610-933-9179

The Planning Commission reviews development plans at public meetings on the second and fourth Wednesday of each month at 7:00 p.m.. If you have questions about development, call the Township office at 610-933-9179, or stop by to review development plans or talk with a Township staff member. Included in the map below are current Planning Commission topics. Learn more at www.up-rov-montco.org/226/Planning-Commission.

Layer

Parcel In Development-December 2020

- Tentative Plan Approved
- Tentative Plan Under Review
- Preliminary Plan Under Review
- Preliminary Plan Approved
- Final Plan Approved
- Final Plan Under Review
- Zoning Text or Map Amendment Application Filed
- Under Construction

Regional Trails

- Perkiomen Trail**
 - Perkiomen Trail
- Schuylkill River Trail**
 - Schuylkill River Trail
- Township Trails**
 - Built Trails
 - Trails in Development

Toll Brothers / Foley Tract
-Text amendment to Mixed Residential Community District

Wirant Dental
-Office Building

S. Lewis Rd. Townhouses
-21 Townhouses

457 Fruit Farm Road
-3-lot subdivision

Marino Holdings
-Single Family Detached

209 Fourth Avenue
-Two unit Subdivision (Twins)

Providence Business Park III
-HBFC Office Building
-BWR Facility
-60k Flex Building

Providence Business Park III
-PD Home and Garden

Sheppard Distribution
-180,000 sf. Distribution Center

615 Egypt Road
-49 Townhouses



Township of Upper Providence

1286 Black Rock Road
Phoenixville, PA 19460

(610) 933-9179

www.uprov-montco.org

PRESORTED
FIRST-CLASS MAIL
U.S. POSTAGE
PAID
LANSDALE, PA
PERMIT NO. 491

Spring 2021

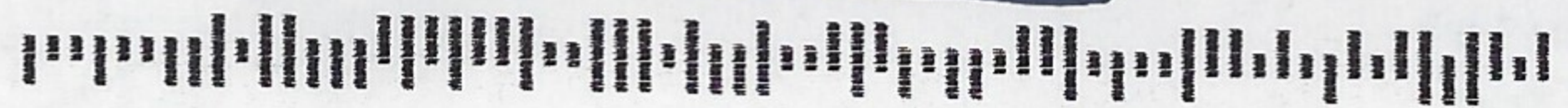
What's Inside:

- ❖ Community Center Updates Pages 1 and 9
- ❖ RiverCrest Trail Page 3
- ❖ Parkhouse update Pages 4 and 5
- ❖ Police Bike Team Page 8
- ❖ Fire House Ground Breaking Page 2
- ❖ Park and Trail Map Pages 6 and 7

T4 P1 *****AUTO**5-DIGIT 19460 611

CURRENT RESIDENT

11 MONTGOMERY AVE
PHOENIXVILLE PA 19460-1160



2021 Summer Camps

Camp Black Rock Full Day Camp - July 12-August 6
Specialty Camps - June 21-August 13

-Bricks 4 Kidz

-Jump Start Sports

-Mad Science

-Theater Camp

-Skateboard Camp

-and more!



Pre-register at getupt.org